

Recombinant Cynomolgus CD3E & CD3D protein, hFc-tagged

Cat. No. CD3E & CD3D-203C **Lot. No.** (See product label)

SPECIFICATION

Product Overview	Cynomolgus CD3E&CD3D Protein is expressed from mammalian with a hFc Tag at the C-terminal. It contains Asp20-Arg687 (Q95LI5. 2) & Phe22-Ala105 (Q95LI8).
Species	Cynomolgus
Source	HEK293
ProteinLength	It contains Asp20-Arg687 (Q95LI5. 2) & Phe22-Ala105 (Q95LI8).
Description	T-cell surface glycoprotein CD3 epsilon & CD3 delta chain, also known as CD3E & CD3D , are single-pass type I membrane proteins. When antigen presenting cells (APCs) activate T-cell receptor (TCR), TCR-mediated signals are transmitted across the cell membrane by the CD3 chains CD3D, CD3E, CD3G and CD3Z. All CD3 chains contain immunoreceptor tyrosine-based activation motifs (ITAMs) in their cytoplasmic domain.
Form	Supplied as 0. 22um filtered solution in PBS (pH 7. 4).
Molecular Mass	The protein has a predicted MW of 36. 9 kDa (CD3E)and 35. 4 kDa (CD3D). Due to glycosylation, the protein migrates to 58-62KDa and 44-46KDa based on Bis-Tris PAGE result.
Endotoxin	Less than 0. 001EU per ug by the LAL method.
Purity	> 95% as determined by SDS-PAGE; > 95% as determined by HPLC

 Tel: 1-631-559-9269 1-516-512-3133

 Email: info@creative-biomart.com  Fax: 1-631-938-8127

 45-1 Ramsey Road, Shirley, NY 11967, USA

Storage The product should be stored at -70°C. Please do not repeated freeze-thaw cycles.

Reconstitution It is recommended that sterile water be added to the vial to prepare a stock solution of 0.2 ug/ul. Centrifuge the vial at 4°C before opening to recover the entire contents.

GENE INFORMATION

Gene Name CD3E CD3e molecule [*Macaca fascicularis* (crab-eating macaque)]

Official Symbol CD3E; CD3D

Synonyms CD3;CD3D;CD3-DELTA;T3D;CD3G

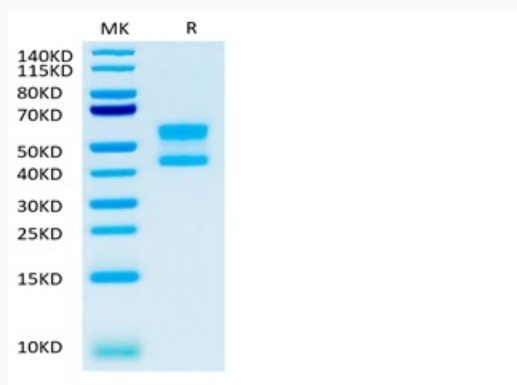
Gene ID 102133065

mRNA Refseq XM_015435352. 1

Protein Refseq XP_015290838. 1

UniProt ID Q95LI5

Tris-Bis PAGE

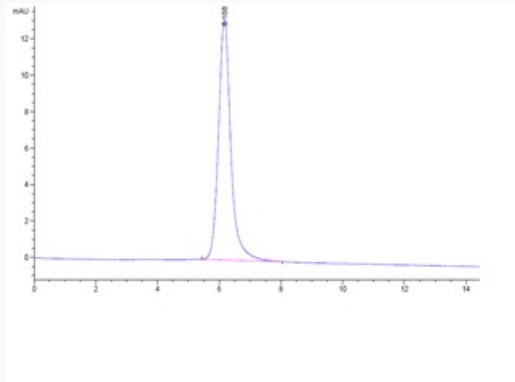


Tel: 1-631-559-9269 1-516-512-3133

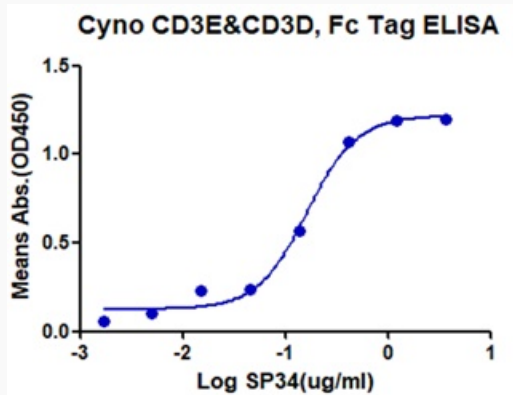
Email: info@creative-biomart.com Fax: 1-631-938-8127

45-1 Ramsey Road, Shirley, NY 11967, USA

HPLC data



ELISA data



 Tel: 1-631-559-9269 1-516-512-3133

 Email: info@creative-biomart.com  Fax: 1-631-938-8127

 45-1 Ramsey Road, Shirley, NY 11967, USA